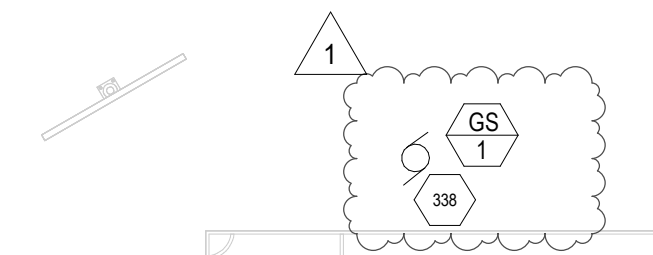
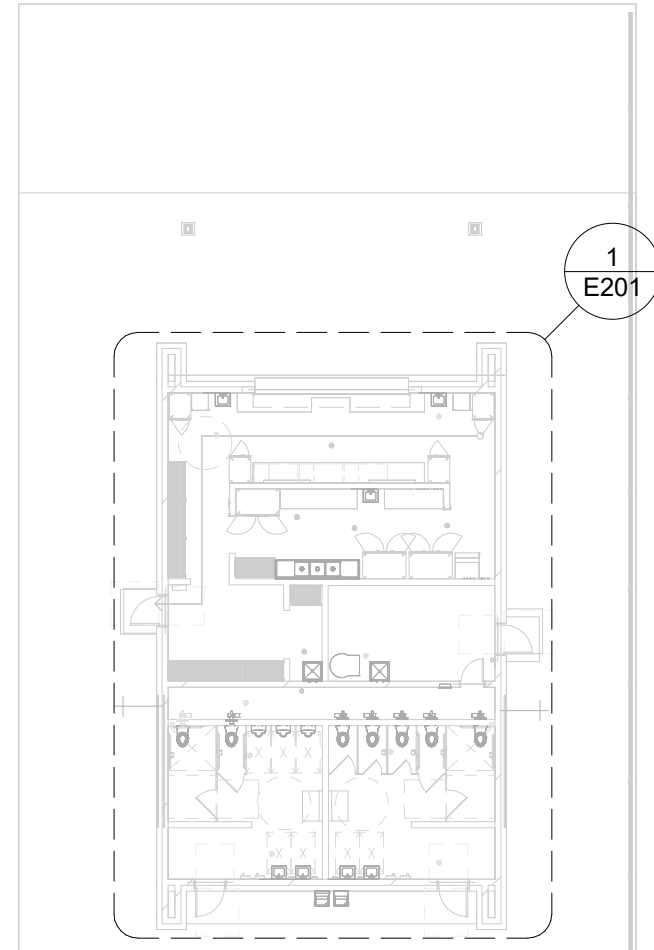
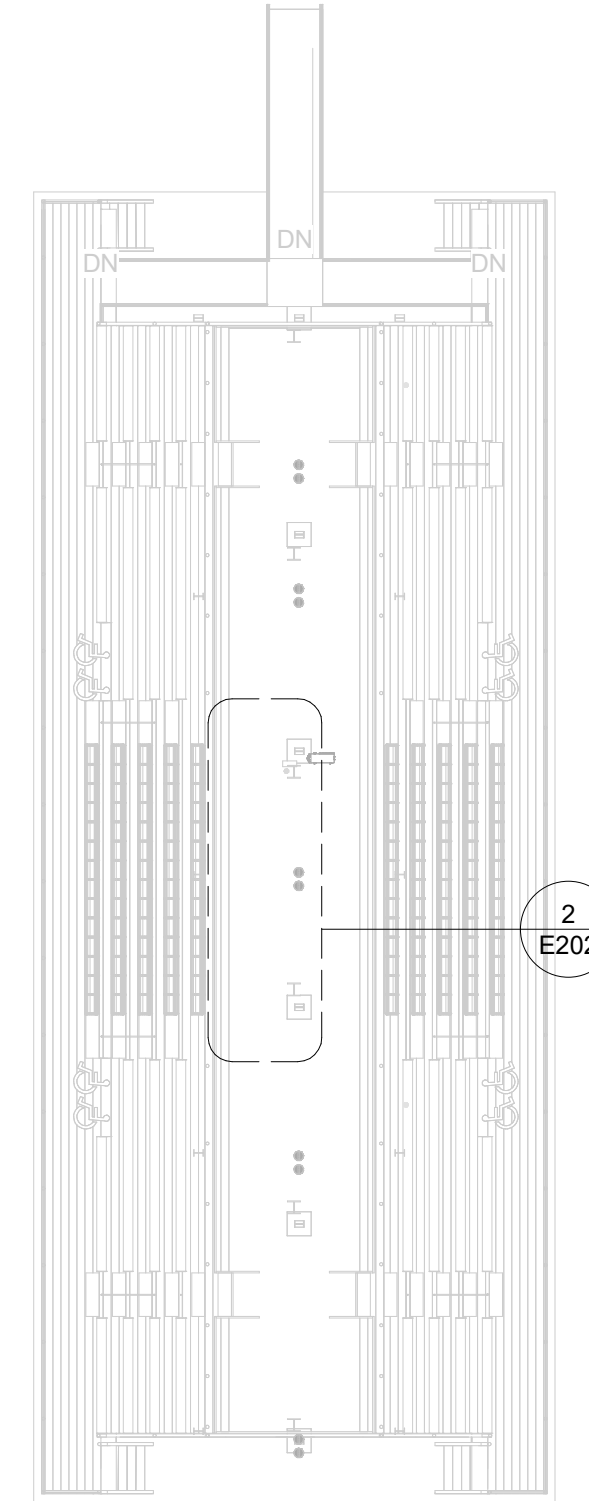


6 5 4 3 2 1

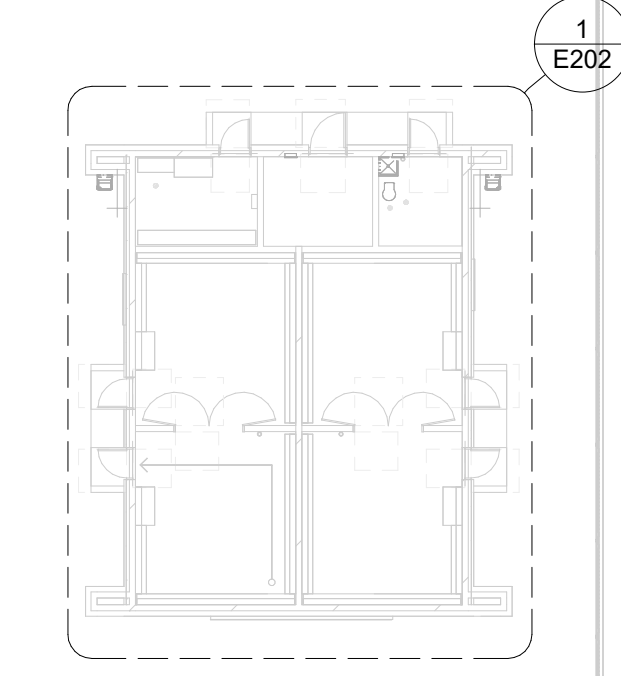
D



C



B



A

6 5 4 3 2 1

GENERAL NOTES

- A. ALL PUBLICLY ACCESSIBLE RECEPTACLES MOUNTED BELOW 66 INCHES AFF SHALL BE TAMPER RESISTANT TYPE.
- B. ALL FACE PLATES IN THE CONCESSION AND TEAM ROOMS SHALL BE STEEL.
- C. REFERENCE MECHANICAL AND PLUMBING PLANS FOR EXACT LOCATIONS OF MECHANICAL AND PLUMBING EQUIPMENT.
- D. ELECTRICAL CONTRACTOR SHALL SIZE WIRING TO ACCOMMODATE VOLTAGE DROP AS REQUIRED.
- E. LOW VOLTAGE CONTRACTOR FOR PROJECT IS SEIMITSU. PLEASE CONTACT MARK CRIBBS AT 912-352-3689 OR markc@seimitsu.com.
- F. ELECTRICAL CONTRACTOR TO COORDINATE WITH UTILITY PRIOR TO CONDUIT INSTALLATION.

KEYNOTES

#	DESCRIPTION
338	ROUTE (1) 3/4" CONDUIT-3#10 AWG, 1#10G FROM PANELBOARD TO GRINDER STATION. COORDINATE FINAL LOCATION WITH CIVIL ENGINEER.



710 South 2nd Street, 8th Floor
Minneapolis, MN 55401
phone: (612) 746-4260

www.jlgarchitects.com



NELSON-RUDIE & ASSOCIATES, INC.
9100 43rd AVE N MINNEAPOLIS, MN 55428
763.887.7600 NELSONRUDIE.COM



8/22/2025

REVISION SCHEDULE

NO.	DESCRIPTION	DATE
1	ADD #1	08/27/25

ANCHOR PARK
CONCESSIONS AND TEAM ROOM FACILITY
PORT WENTWORTH, GA

DATE
07/31/25
PHASE
BID SET

PROJECT
25-050

SHEET
E200

OVERALL POWER & SYSTEMS PLAN

8/21/2025 10:06:39 AM

1
E200
OVERALL POWER & SYSTEMS PLAN
1" = 20'-0"

