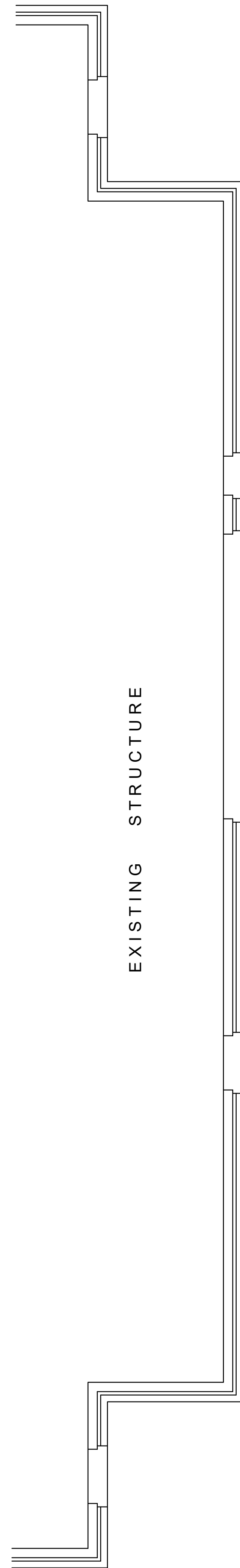


ABBREVIATIONS			
ABV.	ABOVE	MIN.	MINIMUM
A/C	AIR CONDITIONING	MIR.	MIRROR
A.F.F.	ABOVE FINISHED FLOOR	N.T.S.	NOT TO SCALE
AMSL	ABOVE MEAN SEA LEVEL	OC.	ON CENTER
B.C.	BASE CABINET	O.H.	OVERHANG
BRG.	BEARING	OV.	OVENS
BTWN.	BETWEEN	PAN. or PANT.	PANTRY
BM.	BEAM	P.C.	PULL CORD
CAB.	CABINET	PK.	POCKET
CAR.	CARPET	PL.	PLATE
CATH.	CATHEDRAL	PLWD.	PLYWOOD
CJ	CEILING JOIST	PSF	POUNDS PER SQUARE FOR
CLG.	CEILING	P.T.	PRESSURE TREATED
CLO.	CLOSET	R/A	RETURN AIR
CMU	CONCRETE MASONRY UNIT	R&S	ROD AND SHELF
C.O.	CASED OPENING	REF. or REFG.	REFRIGERATOR
CONC.	CONCRETE	REINF.	REINFORCING
CT.	CERAMIC TILE	RM.	ROOM
CTR.	COUNTER	R.O.	ROUGH OPENING
D	DRYER	REQ'D.	REQUIRED
DBL.	DOUBLE	RM.	ROOM
DJ	DOUBLE JOIST	S. or SLP.	SLOPE
DN.	DOWN	SF	SQUARE FEET
DW	DISHWASHER	SH.	SHELF
EA.	EACH	SHLVs.	SHELVES / SHELVING
EXT.	EXTERIOR	SHT.	SHEET
EXIST.	EXISTING	SHW. or SHOW.	SHOWER
EW	EACH WAY	S.L.	SIDE LITE
FND.	FOUNDATION	SPECS.	SPECIFICATIONS
FJ	FLOOR JOIST	SYP.	SOUTHERN YELLOW PINE
FR.	FRENCH	SQ.	SQUARE
FTG.	FOOTING	T	TILE
F.V.	FIELD VERIFY	T&G	TONGUE & GROOVE
GL.	GLASS	TRANS.	TRANSOM
H.B.	HOSE BIBB	TPD	TOILET PAPER DISPENSER
HGT.	HEIGHT	TWB	TOWEL BAR
HEAD.	HEADER	T.P.	TOP PLATE
HVAC	HEATS, VENTILATION & A/C UNIT	TR	TOWEL RING
JST.	JOIST	TYP.	TYPICAL
K.D.A.T.	KILZ DRIED AFTER TREATMENT	U.N.O.	UNLESS NOTED OTHERWISE
KW	KNEE WALL	V	VINYL
LAUN.	LAUNDRY	VERT.	VERTICAL
LIN.	LINEN	W	WASHER
LVL	LAMINATED VENEER LUMBER	W/	WITH
LAT.	LATITUDE	W.C.	WATER CLOSET (TOILET)
LONG.	LONGITUDE	WD.	OR WALL CABINET
MAX.	MAXIMUM	WOOD	WOOD
MANUF.	MANUFACTURER	W.I.C.	WALK IN CLOSET
MBL.	MARBLE	W.H.	WATER HEATER
MED. CAB.	MEDICINE CABINET	WWM	WELDED WIRE MESH
MSL	MEAN SEA LEVEL	WWF	WELDED WIRE FABRIC
MECH.	MECHANICAL	YP	YELLOW PINE
MC	MEDICINE CABINET		
MICRO	MICROWAVE OVEN		

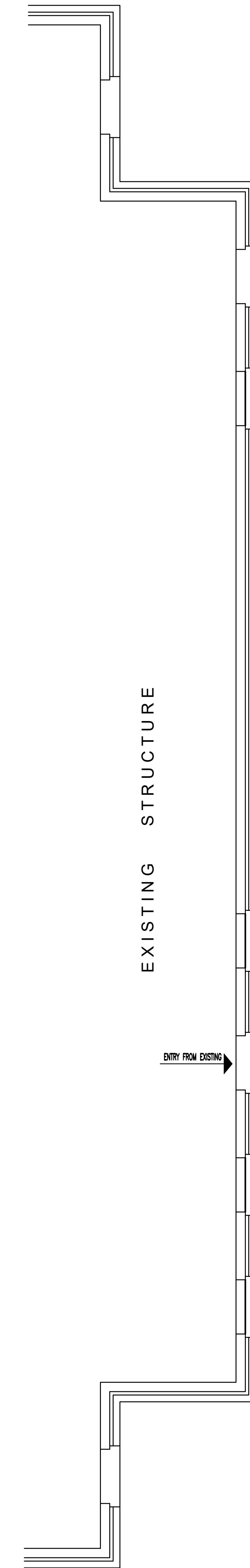


EXISTING FIRST FLOOR DEMOLITION PLAN
SCALE: 1/4"=1'-0"

REMOVE EXISTING NIGHT DEPOSIT & PREP FOR NEW.

REMOVE EXISTING WINDOW UNIT & PREP FOR NEW.

REMOVE EXISTING WINDOW UNIT & PREP FOR NEW.

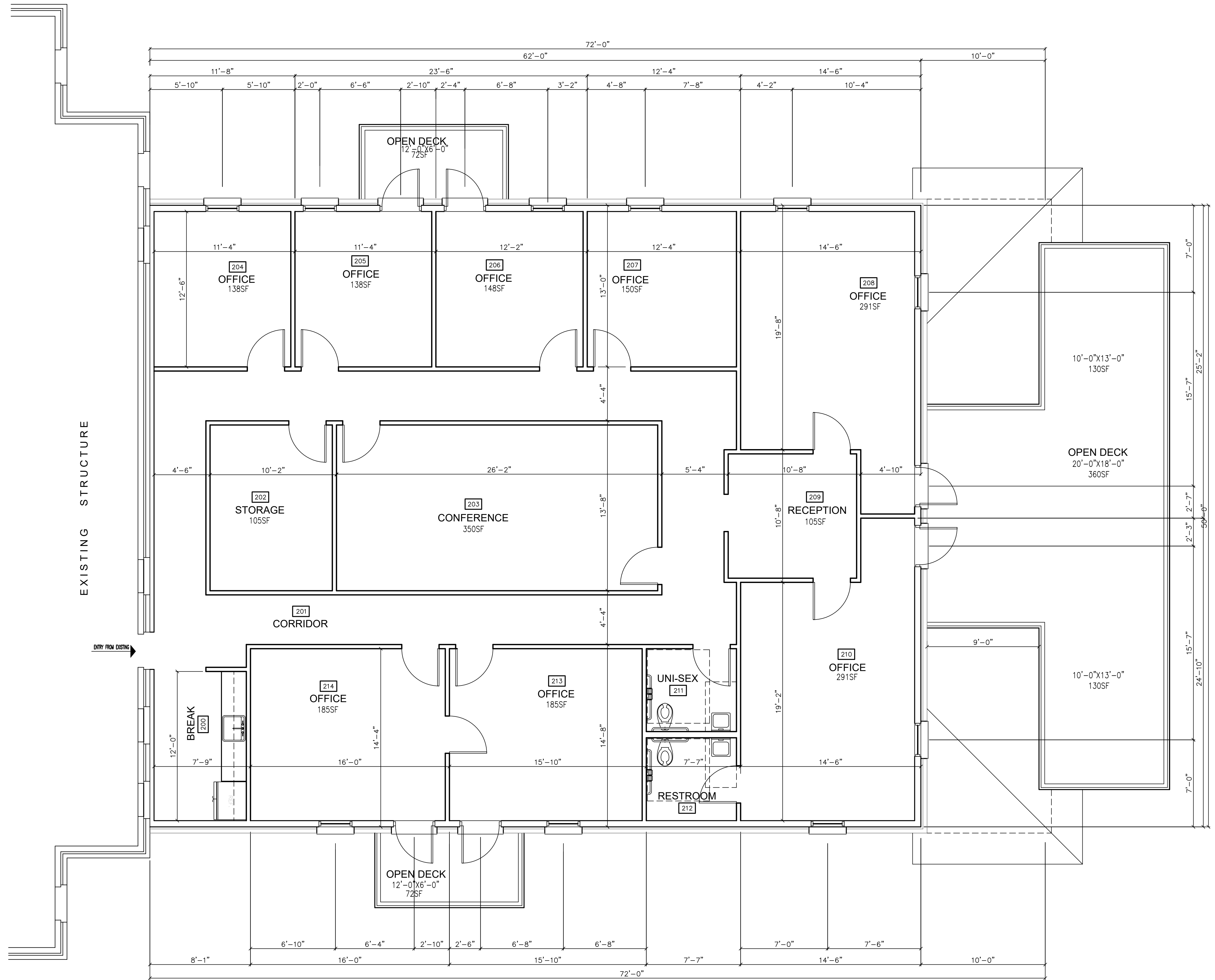


EXISTING SECOND FLOOR DEMOLITION PLAN
SCALE: 1/4"=1'-0"

REMOVE EXISTING WINDOW UNIT & PREP FOR NEW.

REMOVE EXISTING WINDOW UNIT & PREP FOR NEW.

REVISION	
DATE	
NO.	
Office Expansion for City of Portwentworth 7224 SR-21N	
Existing and Demolition Plans	
DATE: AUG. 2024	SCALE: AS SHOWN
CONTR. NO. 24-28	Portwentworth, Georgia
 Residential Designers - Planners P.O. Box 30443 - Savannah, GA 31410 Office / Fax: 912.349.1800	
SHEET A 1 2 OF -	
COPYRIGHT © 2016 Cadman Designs, LLC.	



EXISTING STRUCTURE

ENTRY FROM EXISTING

SECOND FLOOR PLAN
SCALE: 1/4"=1'-0"

REVISION	
DATE	
NO.	
Office Expansion for City of Port Wentworth 7224 SR-21N	
Second Floor Plan	
DATE: AUG. 2024	SCALE: AS SHOWN
CONTR. NO. 24-28	Port Wentworth, Georgia
Residential • Designers • Planners P.O. Box 30443 • Savannah, GA 31410 Office / Fax: 912.349.1800	
SHEET	A3
	4 OF -
COPYRIGHT © 2016 Cadman Designs, LLC.	



REAR ELEVATION
SCALE: 1/4"=1'-0"

REVISION

DATE

NO.

Office Expansion for
City of Portwentworth
7224 SR-21N

Rear Elevation and Details

Chatham County

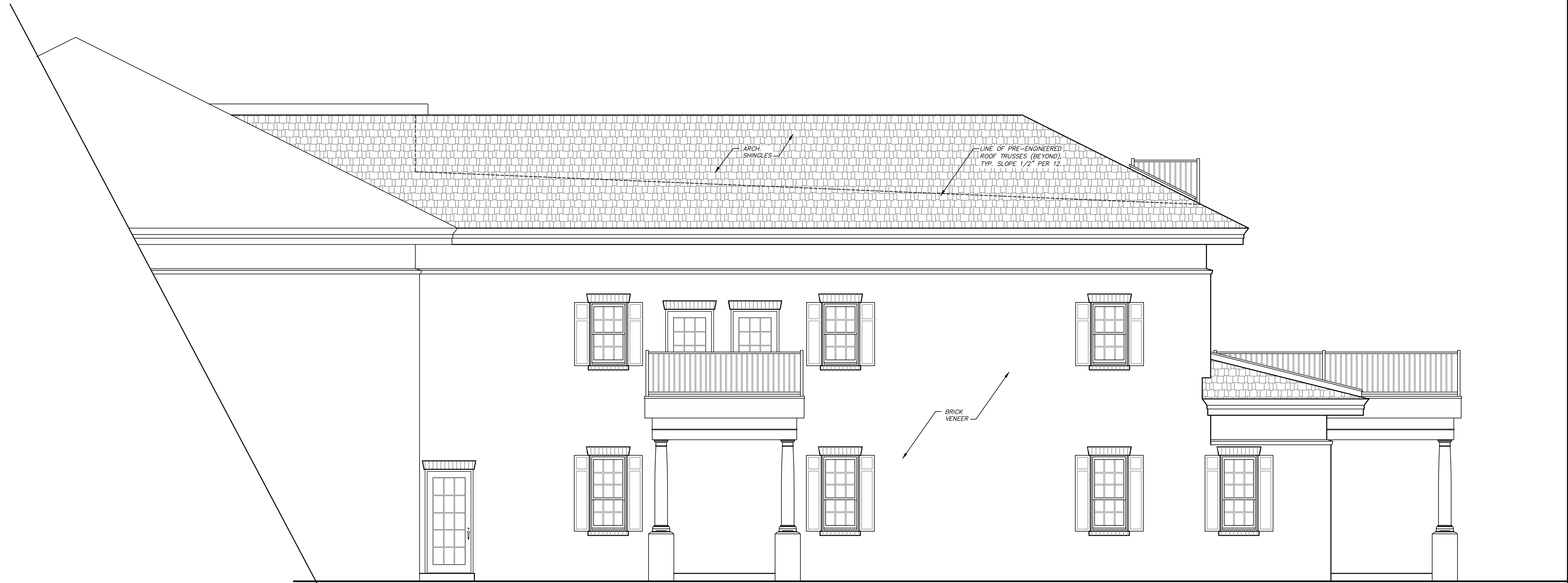
Portwentworth, Georgia

DATE: AUG. 2024 SCALE: AS SHOWN CONTR. NO. 24-28


**Cadman
esigns** LLC
Residential • Designers • Planners
P.O. Box 30443 • Savannah, GA 31410
Office / Fax: 912.349.1800

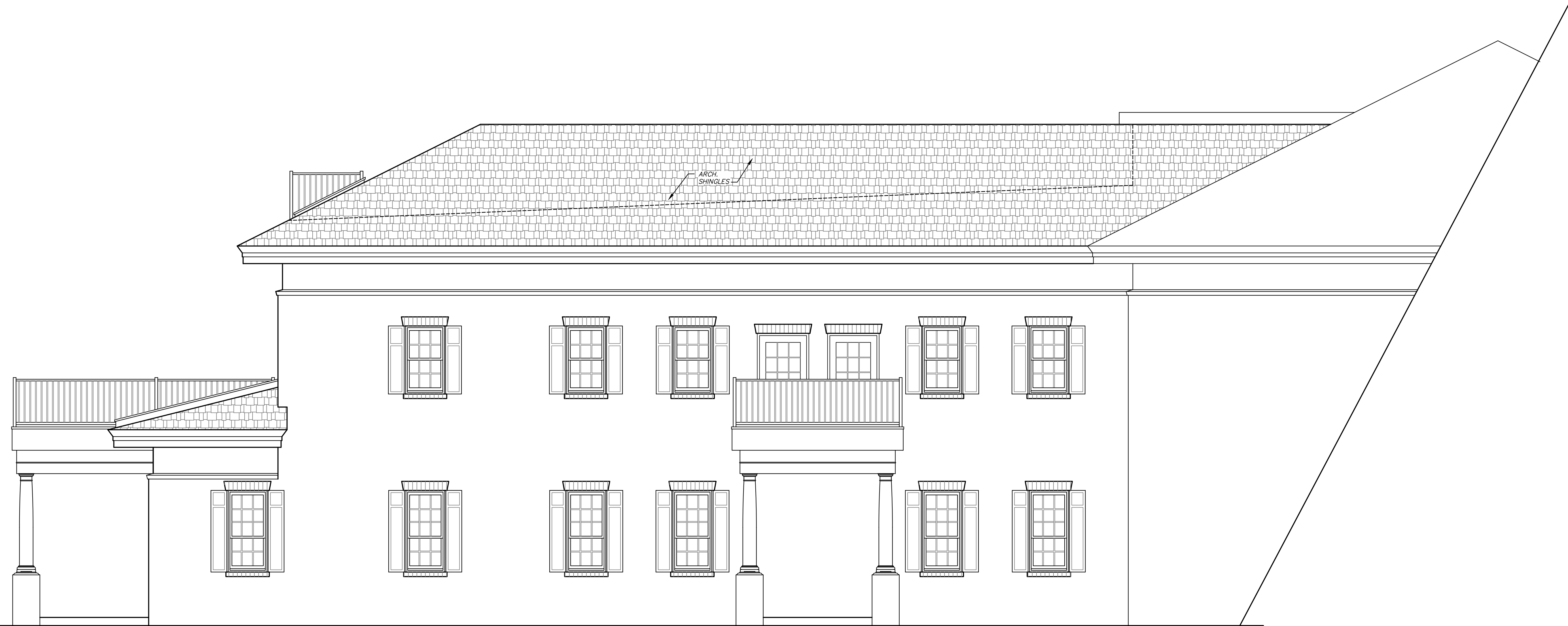
SHEET
A4
5 OF -

COPYRIGHT © 2016
Cadman Designs, LLC.



RIGHT SIDE ELEVATION
SCALE: 1/4"=1'-0"

REVISION	
DATE	
NO.	
Office Expansion for City of Port Wentworth 7224 SR-21N	Chatham County
Right Side Elevation	Port Wentworth, Georgia
DATE: AUG. 2024	SCALE: AS SHOWN
CONTR. NO. 24-28	
 <p>Cadman Designs LLC Residential • Designers • Planners P.O. Box 30443 • Savannah, GA 31410 Office / Fax: 912.349.1800</p>	
SHEET A5	
6 OF -	
<small>COPYRIGHT © 2016 Cadman Designs, LLC.</small>	



LEFT SIDE ELEVATION
SCALE: 1/4"=1'-0"

REVISION

DATE

NO.

Office Expansion for
City of Portwentworth
7224 SR-21N

Portwentworth, Georgia

CONTR. NO. 24-28

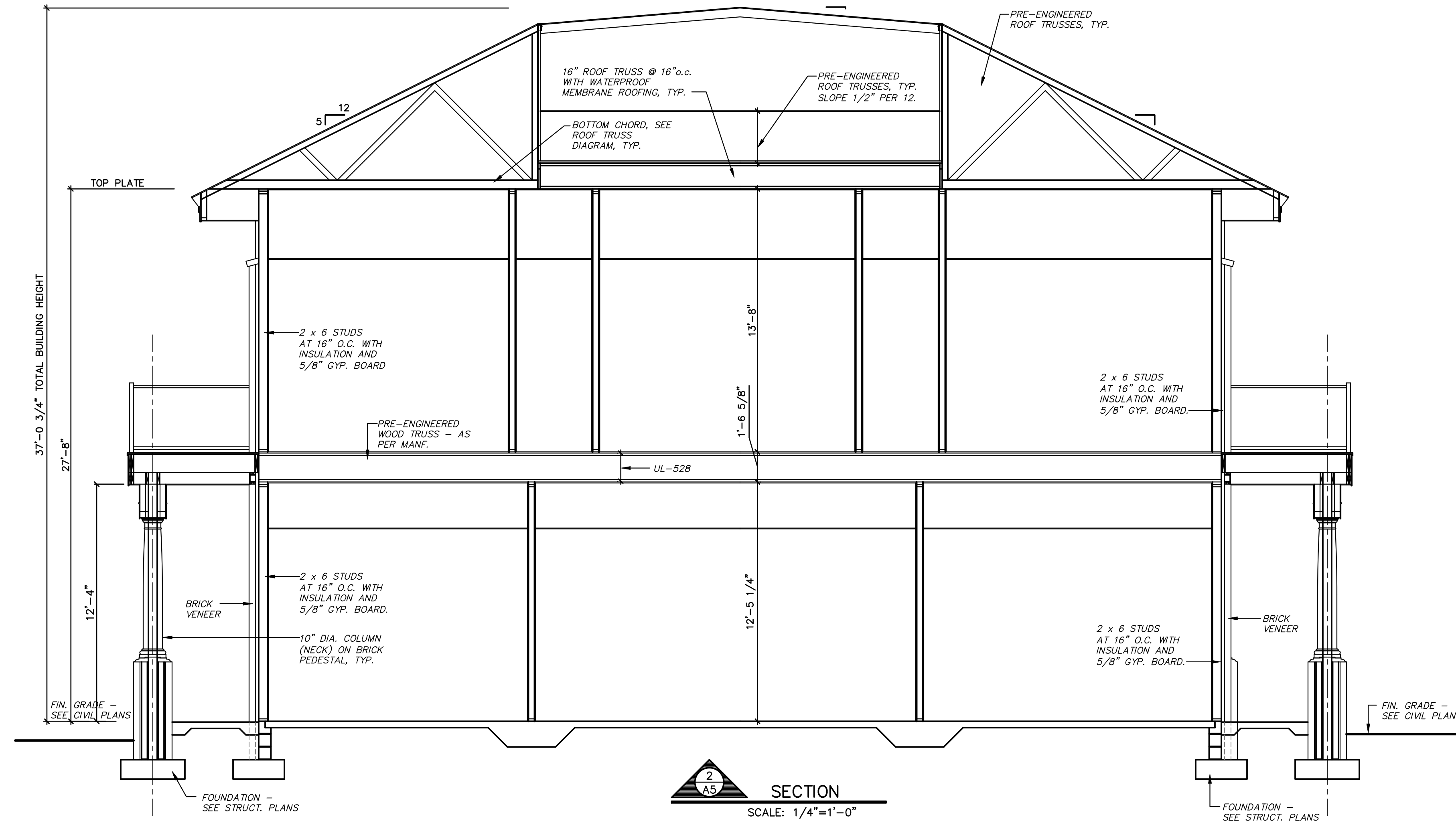
Left Side Elevation

DATE: AUG. 2024 SCALE: AS SHOWN

**Cadman
esigns** LLC
Residential • Designers • Planners
P.O. Box 30443 • Savannah, GA 31410
Office / Fax: 912.349.1800

SHEET
A6
7 OF -

COPYRIGHT © 2016
Cadman Designs, LLC.



NO.	DATE	REVISION

Office Expansion for
City of Port Wentworth
7224 SR-21N
Chatham County

Building Sections
DATE: AUG. 2024 SCALE: AS SHOWN CONTR. NO. 24-28
Port Wentworth, Georgia

Cadman designs LLC
Residential • Designers • Planners
P.O. Box 30443 • Savannah, GA 31410
Office / Fax: 912.349.1800

SHEET
A7
8 OF -

COPYRIGHT © 2016
Cadman Designs, LLC.

GENERAL NOTES REFLECTIVE CEILING PLAN:

1. ALL FIRE AND LIFE SAFETY DEVICES SPECIFICATIONS AND LAYOUT TO MEET REQUIREMENTS DETERMINED BY IBC 2018 AND CITY OF SAVANNAH.

3. SURVEY AND BRACE CEILING GRID AND FIXTURES AS REQUIRED BY GOVERNING CODES & REGULATIONS

3. ALL SWITCHES SHALL BE LOCATED AT 40" A.F.F. TO THE CENTERLINE OF COVER PLATE U.N.O. THERMOSTATS SHALL MOUNTED AT 48" A.F.F. TO CENTERLINE DIRECTLY OVER LIGHT SWITCHES.

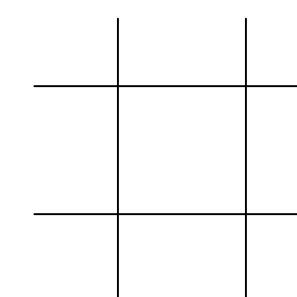

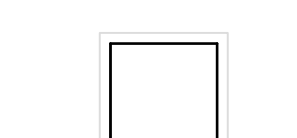
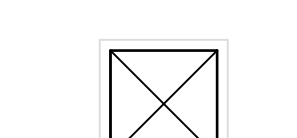
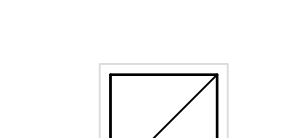
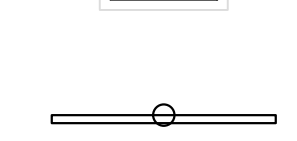

4. AN AVERAGE OF 1.0 FOOT-CANDLES SHALL BE MAINTAINED OVER THE ENTIRE PATH (THIS LEVEL MAY BE DIMINISH TO NOT LESS THAN 0.6 FOOT-CANDLES OVER 1.5 HOURS OF OPERATION) THE BUREAU INSPECTOR WILL METER THE LIGHT LEVELS PROVIDED BY THE INSTALLED SYSTEM. THE CONTRACTOR IS RESPONSIBLE FOR THE INSTALLATION. REQUESTING INSPECTIONS AND MAKE CORRECTIONS AS REQUIRED.

5. ALL EMERGENCY LIGHTING, EXIT SIGNS AND FIRE ALARM/LIFE SAFETY AS SHOWN ON LIFE SAFETY PLAN, SHEET A8.

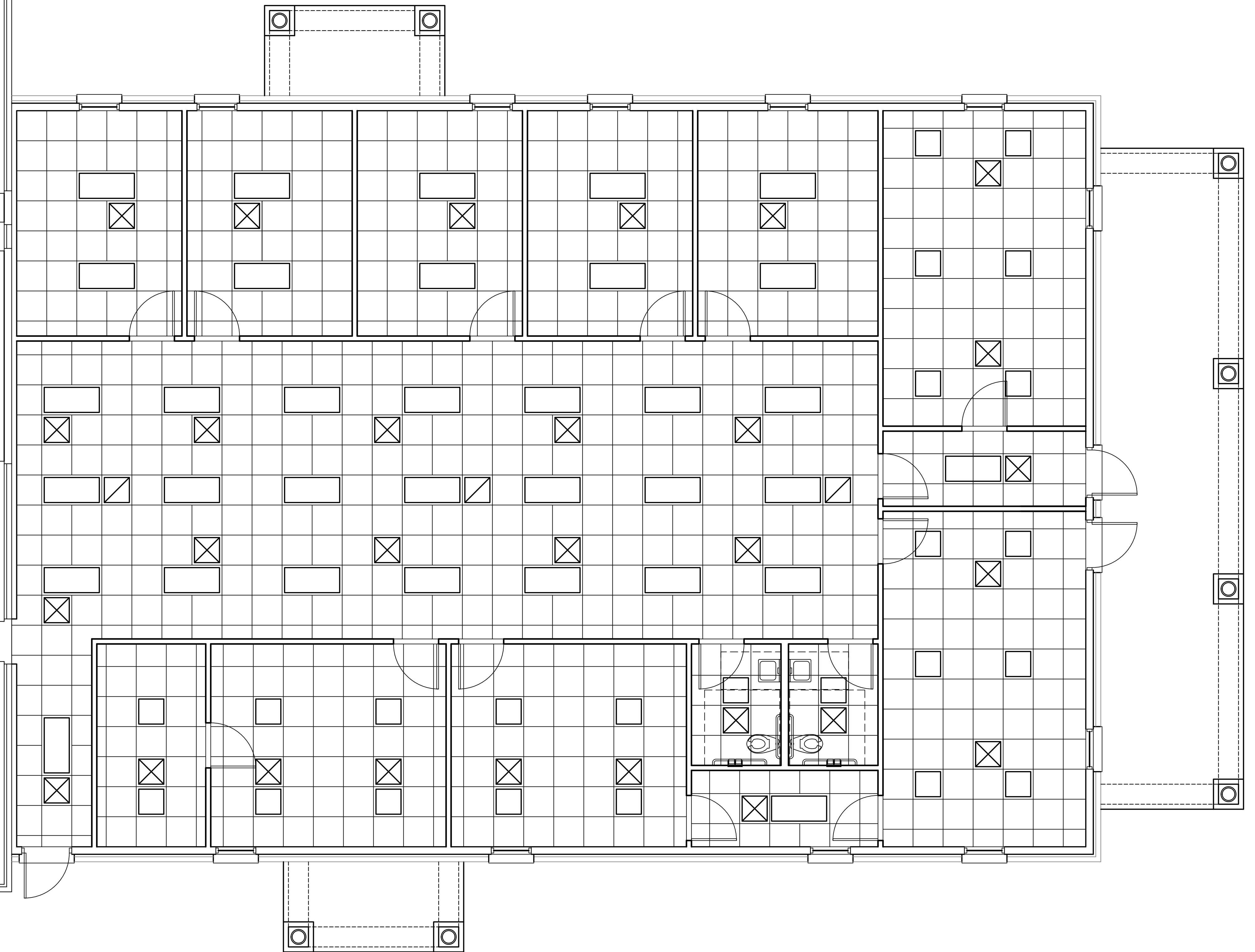
6. COORDINATE WITH STRUCTURAL, MECHANICAL, ELECTRICAL AND SYSTEMS FOR LOCATION OF LIGHT FIXTURES, SMOKE DETECTORS AND OTHER CEILING DEVICES U.N.O.

7. FOR LIGHTING AND HVAC LOCATIONS SEE ELECTRICAL AND MECHANICAL DRAWINGS.

LEGEND:

-  2'x2' FISSURED ACOUSTIC CEILING TILE AND GRID. CEILING SYSTEM PER CISCA STANDARD FOR SEISMIC CATEGORY C.
-  2'x4' RECESSED FLUORESCENT
-  2'x2' RECESSED FLUORESCENT
-  AIR SUPPLY DIFFUSER
-  RETURN-AIR
-  TV MOUNT, LOCATION BY OWNER
-  EF, EXHAUST FAN

FIRST FLOOR REFLECTIVE CEILING PLAN
SCALE: 1/4"=1'-0"

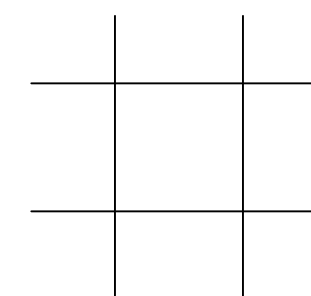
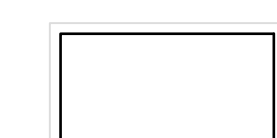
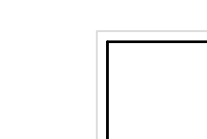
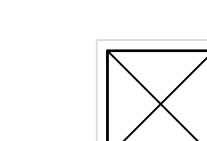
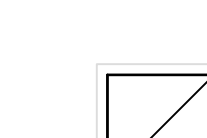
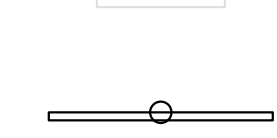



<p>Office Expansion for City of Port Wentworth 7224 SR-21N</p>	<p>First Floor Reflective Ceiling Plan</p>
<p>DATE: AUG. 2024 SCALE: AS SHOWN CONTR. NO. 24-28</p>	<p>Port Wentworth, Georgia Chatham County</p>
<p>Cadman designs LLC Residential • Designers • Planners P.O. Box 30443 • Savannah, GA 31410 Office / Fax: 912.349.1800</p>	
<p>SHEET A8 9 OF -</p>	
<p><small>COPYRIGHT © 2016 Cadman Designs, LLC.</small></p>	

GENERAL NOTES REFLECTIVE CEILING PLAN:

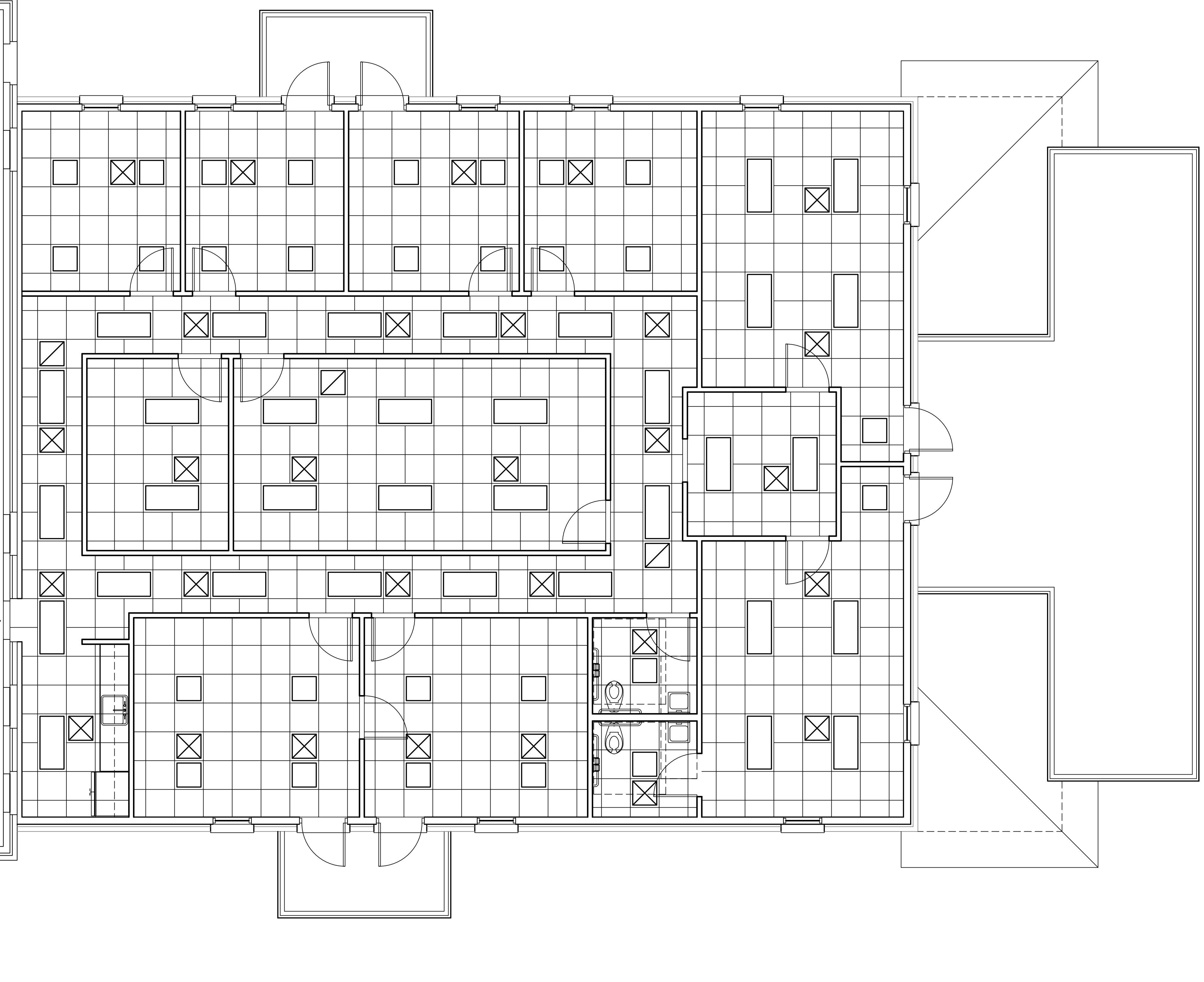
1. ALL FIRE AND LIFE SAFETY DEVICES SPECIFICATIONS AND LAYOUT TO MEET REQUIREMENTS DETERMINED BY IBC 2018 AND CITY OF SAVANNAH.
3. SURVEY AND BRACE CEILING GRID AND FIXTURES AS REQUIRED BY GOVERNING CODES &
3. ALL SWITCHES SHALL BE LOCATED AT 40" A.F.F. TO THE CENTERLINE OF COVER PLATE U.N.O. THERMOSTATS SHALL MOUNTED AT 48" A.F.F. TO CENTERLINE DIRECTLY OVER LIGHT SWITCHES.
4. AN AVERAGE OF 1.0 FOOT-CANDLES SHALL BE MAINTAINED OVER THE ENTIRE PATH (THIS LEVEL MAY BE DIMINISH TO NOT LESS THAN 0.6 FOOT-CANDLES OVER 1.5 HOURS OF OPERATION) THE BUREAU INSPECTOR WILL METER THE LIGHT LEVELS PROVIDED BY THE INSTALLED SYSTEM. THE CONTRACTOR IS RESPONSIBLE FOR THE INSTALLATION. REQUESTING INSPECTIONS AND MAKE CORRECTIONS AS REQUIRED.
5. ALL EMERGENCY LIGHTING, EXIT SIGNS AND FIRE ALARM/LIFE SAFETY AS SHOWN ON LIFE SAFETY PLAN, SHEET A8.
6. COORDINATE WITH STRUCTURAL, MECHANICAL, ELECTRICAL AND SYSTEMS FOR LOCATION OF LIGHT FIXTURES, SMOKE DETECTORS AND OTHER CEILING DEVICES U.N.O.
7. FOR LIGHTING AND HVAC LOCATIONS SEE ELECTRICAL AND MECHANICAL DRAWINGS.

LEGEND:

-  2'x2' FISSURED ACOUSTIC CEILING TILE AND GRID. CEILING SYSTEM PER CISCA STANDARD FOR SEISMIC CATEGORY C.
-  2'x4' RECESSED FLUORESCENT
-  2'x2' RECESSED FLUORESCENT
-  AIR SUPPLY DIFFUSER
-  RETURN-AIR
-  TV MOUNT, LOCATION BY OWNER
-  EF, EXHAUST FAN

SECOND FLOOR REFLECTIVE CEILING PLAN
SCALE: 1/4"=1'-0"

ENTRY FROM EXISTING




<p>Office Expansion for City of Portwentworth 7224 SR-21N</p>	<p>Second Floor Reflective Ceiling Plan</p>
<p>DATE: AUG. 2024 SCALE: AS SHOWN CONTR. NO. 24-28</p>	<p>Portwentworth, Georgia</p>
<p>Cadman designs LLC Residential • Designers • Planners P.O. Box 30443 • Savannah, GA 31410 Office / Fax: 912.949.1800</p>	
<p>SHEET A9 10 OF -</p>	
<p><small>COPYRIGHT © 2016 Cadman Designs, LLC.</small></p>	

ROOM FINISH SCHEDULE FIRST FLOOR							
AREA	ROOM NO.	FLOOR	WALLS	BASE	CEILING		REMARKS
		FIN.	FIN.	FIN.	FIN.	HT.	
HALLWAY	100	C	DW	V	ACT		10'-0"
		VCT	SGF	-	-		
OPEN OFFICE AREA	101	C	DW	V	ACT		10'-0"
		VCT	SGF	-	-		
OFFICE	102	C	DW	V	ACT		10'-0"
		VCT	FF	-	-		
OFFICE	103	C	DW	V	ACT		10'-0"
		VCT	FF	-	-		
OFFICE	104	C	DW	V	ACT		10'-0"
		VCT	FF	-	-		
OFFICE	105	C	DW	V	ACT		10'-0"
		VCT	FF	-	-		
OFFICE	106	C	DW	V	ACT		10'-0"
		VCT	FF	-	-		
OFFICE	107	C	DW	V	ACT		10'-0"
		VCT	FF	-	-		
OFFICE	108	C	DW	V	ACT		10'-0"
		VCT	FF	-	-		
PRIVATE	109	C	DW	V	ACT		10'-0"
		VCT	FF	-	-		
MEN'S	110	C	DW	C	ACT		10'-0"
		VCT	CT	CT	-		
WOMEN'S	111	C	DW	C	ACT		10'-0"
		VCT	CT	CT	-		
OFFICE	112	C	DW	V	ACT		10'-0"
		VCT	FF	-	-		
OFFICE	113	C	DW	V	ACT		10'-0"
		VCT	FF	-	-		
FILE ROOM	114	C	DW	V	ACT		10'-0"
		VCT	FF	-	-		

C/CONCRETE HC/HARDENED CONCRETE V/VINYL DW/DRYWALL PWD/PLYWOOD HM/HOLLOW METAL EGF/EGGSHELL PAINT FINISH
 WRD/WATER RESISTANT DRYWALL SGF/SEMI GLOSS PAINT FINISH FF/FLAT PAINT FINISH ST/STAIN FINISH ACT/ACOUSTICAL CEILING TILE
 CMU/CONCRETE MASONRY UNIT CT/CERAMIC TILE S/SPECS GF/ GLOSS FINISH AST/ANTI STATIC TILE CP/CARPET ML/METAL LINER PANEL
 VCT/VINYL COMPOSITION TILE PL/PLASTIC LAMINATE NSS/NON-SLIP CONCRETE FINISH WITH NON-PERMEABLE SEALER CAPO/COLOR AS PER OWNER

ROOM FINISH SCHEDULE SECOND FLOOR							
AREA	ROOM NO.	FLOOR	WALLS	BASE	CEILING		REMARKS
		FIN.	FIN.	FIN.	FIN.	HT.	
CORRIDOR	200	C	DW	V	ACT		9'-0"
		VCT	SGF	-	-		
BREAKROOM	201	C	DW	V	ACT		9'-0"
		VCT	SGF	-	-		
STORAGE	202	C	DW	V	ACT		9'-0"
		VCT	FF	-	-		
CONFERENCE	203	C	DW	V	ACT		9'-0"
		VCT	FF	-	-		
OFFICE	204	C	DW	V	ACT		9'-0"
		VCT	FF	-	-		
OFFICE	205	C	DW	V	ACT		9'-0"
		VCT	FF	-	-		
OFFICE	206	C	DW	V	ACT		9'-0"
		VCT	FF	-	-		
OFFICE	207	C	DW	V	ACT		9'-0"
		VCT	FF	-	-		
OFFICE	208	C	DW	V	ACT		9'-0"
		VCT	FF	-	-		
RECEPTION	209	C	DW	V	ACT		9'-0"
		VCT	FF	-	-		
OFFICE	210	C	DW	V	ACT		9'-0"
		VCT	FF	-	-		
RESTROOM	211	C	DW	C	ACT		9'-0"
		VCT	CT	CT	-		
UNI-SEX	212	C	DW	C	ACT		9'-0"
		VCT	CT	CT	-		
OFFICE	213	C	DW	V	ACT		9'-0"
		VCT	FF	-	-		
OFFICE	214	C	DW	V	ACT		9'-0"
		VCT	FF	-	-		

C/CONCRETE HC/HARDENED CONCRETE V/VINYL DW/DRYWALL PWD/PLYWOOD HM/HOLLOW METAL EGF/EGGSHELL PAINT FINISH
 WRD/WATER RESISTANT DRYWALL SGF/SEMI GLOSS PAINT FINISH FF/FLAT PAINT FINISH ST/STAIN FINISH ACT/ACOUSTICAL CEILING TILE
 CMU/CONCRETE MASONRY UNIT CT/CERAMIC TILE S/SPECS GF/ GLOSS FINISH AST/ANTI STATIC TILE CP/CARPET ML/METAL LINER PANEL
 VCT/VINYL COMPOSITION TILE PL/PLASTIC LAMINATE NSS/NON-SLIP CONCRETE FINISH WITH NON-PERMEABLE SEALER CAPO/COLOR AS PER OWNER

REVISION									
DATE									
NO.									
Office Expansion for City of Port Wentworth 7224 SR-21N									
Schedules and Notes									
 Residential ■ Designers ■ Planners P.O. Box 30443 ■ Savannah, GA 31410 Office / Fax: 912.349.1800									
DATE: AUG. 2024 SCALE: AS SHOWN CONTR. NO. 24-28 Port Wentworth, Georgia Chatham County									
SHEET A10 11 OF -									
COPYRIGHT © 2016 Cadman Designs, LLC									